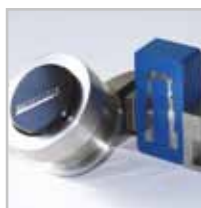




The **BRILLANT 210** is a precision wet abrasive cut-off machine with manual Z-axis.

The cutting force can be set via the load applied on the pivoting arm.

In the cutting chamber of the robust Aluminium construction, the different sample arms can be exchanged simply and easily. The special sample holder can be removed with the clamped sample.



PIVOTING ARM WITH LOAD APPLIED

The cutting force is regulated through the load applied to the sample on cut-off wheel whereby a weight is slid along a scale.

Z-AXIS

The manual Z-axis can be adjusted with 0.01 mm exactness for parallel cuts.

SPEED

The speed of the cut-off wheel is variable.

SAMPLE ARM

The sample is clamped in a removable sample holder. This sample arm can be then inserted quickly into the easily accessible cutting chamber. Arms are available for different sample diameters and geometries.



BRILLANT 210



BASIC MODULE

BRILLANT 210

Order No.: M1870010

- » Manual axis
- » Solid aluminium design
- » Swivel arm with variable load

EQUIPMENT

POWER SUPPLY (select equipment)

Equipment 1

230 V/50 Hz (1/N/PE)

Order No.: A1870001

Equipment 2

110 V/60 Hz (1/N/PE)

Order No.: A1870002

SAMPLE HOLDER ARM (select equipment)

Equipment 1

Sample holder arm 50

Order No.: A1870004

» Shaft Ø 50 mm



Equipment 2

Sample holder arm 40

Order No.: A1870005

» Shaft Ø 40 mm



ACCESSORIES



RECIRCULATION COOLING SYSTEM



24 V pump

Order No.: A1870003

- » No voltage selection required
- » Compartment approx. 5 Ltr.
- » Pump approx. 8 Ltr./min

SYSTEM LAB CABINET



Order No.: M5800044

- » System lab assembly
- » WxHxD 880x800x800 mm

SAMPLE HOLDER FOR 210



Sample holder for shaft 50
Sample holder for shaft 40

Round samples Ø 30 - 50 mm
Round samples Ø 25 - 40 mm

Order No.: Z1870000
Order No.: Z1870003



Sample holder for shaft 50
Sample holder for shaft 40

Geometric samples up to 32 mm
Geometric samples up to 22 mm

Order No.: Z1870001
Order No.: Z1870004

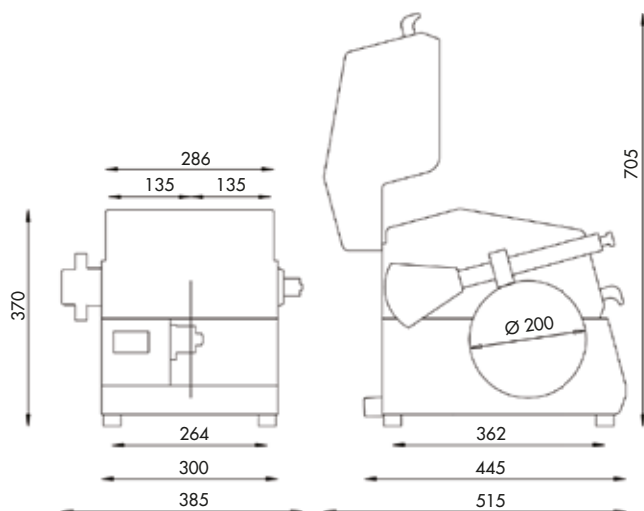


Sample holder for shaft 50
Sample holder for shaft 40

Parallel clamping vice 50 mm
Parallel clamping vice 40 mm

Order No.: Z1870002
Order No.: Z1870005

SPECIFICATIONS



Cutting capacity	1	Ø 50
	2	Ø 40
Cut-off wheels	Ø 200 mm/8"	
Arbour size	Ø 12.7 mm	
Variable speed	250 – 4000 rpm	
Z-axis	10 mm	
Precision	0.01 mm	
Connected load	0.9 kVA	
Power supply	1	230 V/50 Hz (1/N/PE)
	2	110 V/60 Hz (1/N/PE)
WxHxD	approx. 385 x 370 x 445 mm	
Weight	22 kg	