



The **KRISTALL 650** is a mobile battery supplied electrolytic polisher and etcher.

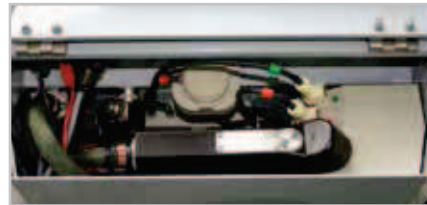
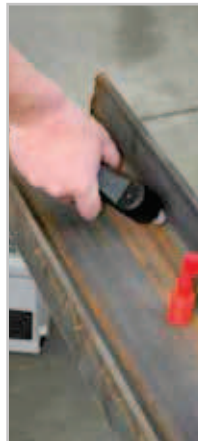
It convinces by its compact and robust construction, ideal for use outside of the lab. The simple operation simultaneous with high functionality is matchless.

The epoxy-coated aluminium housing meets highest demands on functionality, stability and design.

All sensitive parts are well protected for transport and local operation. For maximum comfort the Kristall 650 is equipped with handle and carrying strap.



KRISTALL 650



POLISHING UNIT

The polishing head is integrated in the handle. Polishing and etching gets automatically ready by touching the piezo button in the handle. A multi-coloured LED on the handle indicates all program states. The operator can focus his attention completely to the checkpoint.

The handle is connected to the unit by a flexible hose.

For flat surfaces, the exchangeable sealing-lip ring is especially suitable. Complex surfaces (e.g. angled areas) can be examined by using an additional flexible end piece which can be cut to size individually.

The pump's adjustable performance allows an infinitely variable flow rate regulation of electrolyte.

CONTROL PANEL

The LC-display clearly shows all important parameters like current, voltage, time as well as the charge of battery.

All parameters can be adjusted via control panel during operation. You can choose between constant current and constant voltage.

BATTERY SUPPLIED OPERATION

The high capacity lithium battery allows with a single charge approximately 150 simple etching/polishing cycles including pre-grinding (state of charge display, charging and mains operation via external power supply). Up to 30 examinations are possible by using the mobile grinder at the same time.

INNOVATIVE DETAILS

Micro motor, straight handle and accessories of our mobile grinder Saphir 300 can optionally be connected directly to the controlling unit of the Kristall 650 (suitable storage area inside the case).

The electrolyte tanks are replaceable and with screwed top for external storage.

The integrated return-flow filter optimizes the life time of the electrolyte.

SAFETY FUNCTIONS

An additional locking valve allows the flow of the electrolyte only during the cycle.



BASIC MODULE

KRISTALL 650

Order No.: M6201000

- » Mobile electrolytic polisher and etcher
- » Fully automatic, microprocessor controlled program sequence
- » Battery supplied by high capacity lithium battery
- » Operation and charging by external power supply
- » Polishing head with automatic start-stop function and multicolour LED for displaying current operating states
- » Infinitely variable flow rate regulation of electrolyte
- » Additional locking valve to avoid leakage of electrolyte
- » Control panel with clear LC display
- » Variable power and voltage supply, adjustable time
- » Return-flow filter (filter pads exchangeable without tool)
- » Replaceable electrolyte tank
- » Flexible, exchangeable sealing-lip ring for flat surfaces; additional end-piece which can be cut to size for examination of complex surfaces (e.g. angled areas)
- » Solid epoxy-coated aluminium case with carrying-sling and handle
- » Prepared for storing up and controlling manual grinder Saphir 300 (option)
- » Incl. maintenance set

EQUIPMENT

POWER SUPPLY (select equipment)

Equipment 1

230 V/50 Hz (1/N/PE)

Order No.: A6201000

Equipment 2

110 V/60 Hz (1/N/PE)

Order No.: A6201001

FACILITY FOR TRANSPORTABLE GRINDER AND POLISHER (select equipment)

Equipment 1

without facility

Order No.: A6201004

Equipment 2

with facility

Order No.: A6201005

ACCESSORIES

TRANSPORTABLE GRINDER AND POLISHER

Order No.: Z6201002

- » speed 1,000-14,000 rpm
- » for connecting to Kristall 650
- » facility A6201005 required

» required accessories for transportable grinder and polisher see accessories Saphir 300 (page 3.8)

ACCESSORIES SET FOR KRISTALL 650 IN SUITCASE

Order No.: Z6201001

Content:

- » 5 x V-ring
Order No.: 95003606
- » 1 x profile ring material appr. 150 mm
Order No.: 06201052
- » 1 x flexible end piece for profile ring
Order No.: 06201051
- » 1 x tube cutter
Order No.: 95004030
- » 10 x filter pads Ø 40,5 mm
Order No.: 95003985
- » 1 x Dolphin-Connector
Order No.: 82000374

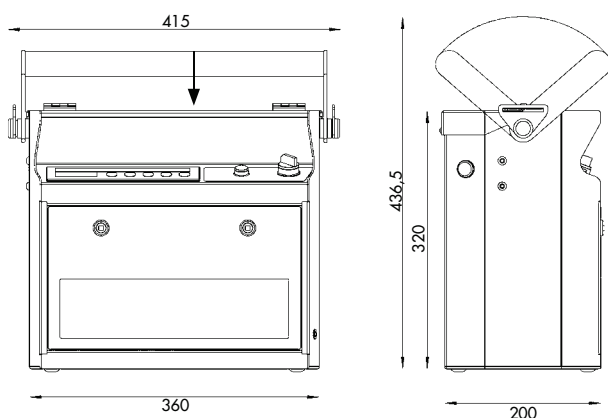
BOTTLE WITH SCREW TOP FOR ELECTROLYTE

Order No.: 95003955

- » 1 liter



SPECIFICATIONS



Power	160 W
Voltage	90 V DC
Current	2 A
External power supply	1 230V/50 Hz (1/N/PE)
	2 110V/60 Hz (1/N/PE)
Diameter of polishing area	approx. 9 mm
Dimensions WxHxD	415 x 400 x 200 mm
Weight (without electrolyte)	approx. 8.5 kg
Electrolyte tank	1 ltr.