



The **SAPHIR 550 WITH RUBIN 540** is a single wheel grinder and polisher for working wheels Ø 200 - 300 mm. The especially strong, speed controlled drive allows the strongest pressures. The clearly arranged and robust menu display enables user friendly operation. The parallel grinding unit of the Rubin 540 moves the exposed sample holder in clockwise/anticlockwise rotation with variable speed across the working area. Pressing down the samples just by their own weight ensures a gentle preparation of pressure-sensitive and delicate specimen. The shock-resistant plastic basin, powder coated Aluminium housing and high standard of technology inside the unit lend the requisites for quiet and smooth running.



VARIABLE SPEED

The speed is shown digitally on the display. The base speed can be infinitely adjusted between 50 and 600 rpm. The speed can also be changed during the working cycle.

WATER

The automatically switched basin rinsing is cooling the working wheel and cleaning the basin during the entire working process. The rinsing tap can be pulled out with the hose extension. Optimum distribution of water can be reached by swinging the tap left and right across the diameter of the working wheel.



BASIC MODULE WITH RUBIN 540

SAPHIR 550 – RUBIN 540

Order No.: M5600080

- » Single wheel grinder/polisher with Rubin 540 head
- » Variable speed
- » Polishing head: clockwise/anti-clockwise rotation
- » Individual sample holder design
- » Automatic water solenoid
- » Basin rinsing
- » Incl. splashing ring and cover
- » Aluminium case, powder coated
- » Impact-proof plastic bowl

EQUIPMENT

POWER SUPPLY (select equipment)

Equipment 1

230 V/50 Hz (1/N/PE)

Order No.: A5600027

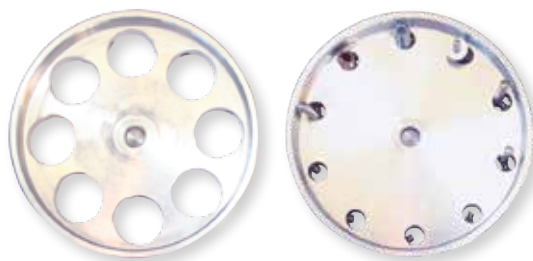
Equipment 2

110 V/60 Hz (1/N/PE)

Order No.: A5600028

ACCESSORIES

SAMPLE HOLDER FOR RUBIN 540



- » Preparation of pressure-sensitive samples, down-pressure by own weight
- » Fitting sample holder on request.

PARALLEL-GRINDING UNIT FOR RUBIN 540

Order No.: Z5442007

- » Precise grinding and polishing results quick and easy by use with duo-sample holder and corresponding accessories
- » Clamped workpiece is held parallel to the rotating grinding disc during the whole working process
- » Combination also suitable for target preparation of microelectronic components (e.g. circuit-boards for general purpose)



Working wheels, sample holders etc. see page 3.41 and further.
Technical changes are reserved.

ACCESSORIES


**DOSING UNIT TOPAS 130
FOR SAPHIR 550-RUBIN 540**

Order No.: M6300040

» For further information see page 3.45,
,Topas130'

SETTLING TANK

» 2-chamber-pvc-compartment, 45 Ltr.
» Basket with filter bag



**For System lab
(insertion mechanism)**
Order No.: A5800495



Mobile
Order No.: A5800496

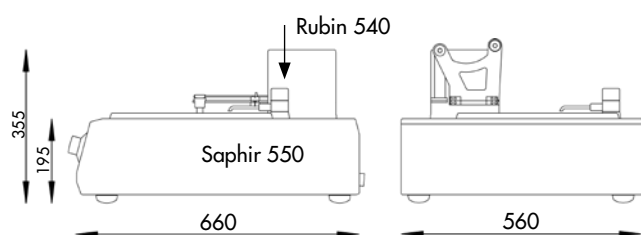
SYSTEM LAB CABINET


Order No.: M5800042
» System lab assembly
» WxHxD 880x800x800 mm

CONNECTION SET

Order No.: Z5600009
» 1 drain tube Ø 40 mm; 1.5 m
» 1 pressure tube R 1/2"; 2 m
» 1 pressure tube; 3 m long with coupling
and screw thread R 3/8"

SPECIFICATIONS


SAPHIR 550 WITH RUBIN 540

Working wheels	Ø 200 - 300 mm
Connected load	2.3 kVA
Power supply	1 230 V/50 Hz (1/N/PE)
	2 110 V/60 Hz (1/N/PE)
Pressure	weight
Speed base	50 - 600 rpm
Speed sample holder	15 - 40 rpm
WxHxD	approx. 560 x 355 x 660 mm
Weight	37 kg