

Non Destructive Coating Thickness Measurement

QuaNix[®] 8500



Original gauge size



The Gauge System Setting New Standards

- ▶ Modular system with exchangeable probes up to 5 mm measuring range
- ▶ Easy-to-use menu – even for user specific calibrations
- ▶ Broad variety of applications
- ▶ Wireless data transfer via USB

NEW

Gauge



- Elegant modern design for One-Hand-Operation
- Modular system with exchangeable digital probes

Display

- Clear graphic display with high resolution
- All languages can be displayed

Keypad

- State of the art keypad with illuminated keys
- Easy to use menu

- Durable chassis for on-site operations
- Basic and Premium version available

- Backlit display
- Flip option by 180 degrees

- Two colour LED display to read measurement process, data transfer and monitoring of limits



Exchangeable Fe, NFe and dual probes

Menu Structure

QuaNix®

8500
Basic

8500
Premium

Measuring Mode ►

Substrate Selection

Fe/NFe - Fe - NFe
Combined Measurement

●

●

Measurement Type

Single Measurement
Continuous Measurement

●

●

Upper-/Lower Limit
Averaging

●

●

Data Memory ►

(* max. 2000 measurements per batch)

Readings
Number of Batches
Batch name - Info - Upper-/lower limit

up to 100
1

up to 13000*
999

●

Statistics ►

Mean/Standard Deviation/Maximum/
Minimum - also for the Batch/Batches

●

●

Calibration ►

Number of Custom Calibration (one-point/two-point)
Average Zero

1

100

●

Setup ►

Display

Unit: μm/mil
Resolution: Coarse/Normal/Fine
Backlight: Auto/OFF
Orientation: Normal/Flip

●

●

●

●

●

●

●

●

●

●

Wireless Interface: ON/OFF
Display System Info
Language: up to 3
Buzzer: On/OFF
Date/Time

●

●

●

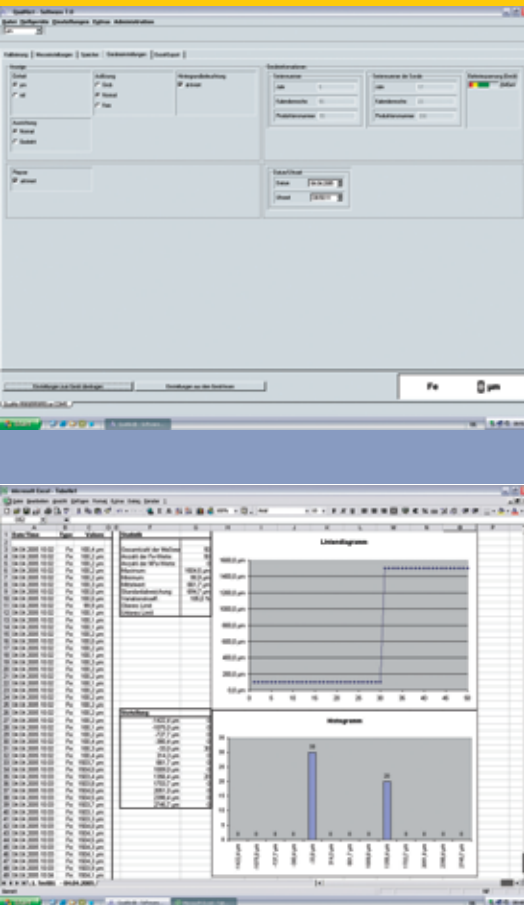
●

●

●

●

●



Screenshots

NEW

- ▶ Wireless bi-directional data transfer between gauge and PC via USB
- ▶ Automatic identification of gauges, including transfer of data and settings
- ▶ Easy configuration of all major functions of the **QuaNix®8500** on the PC
- ▶ Simultaneous operation and administration of multiple **QuaNix®8500** gauges
- ▶ All languages installable via editor (including gauge software)
- ▶ Downloadable software updates via Internet
- ▶ Online measurements
- ▶ OnScreen Help
- ▶ Easy export of readings into Excel for statistical functions (data and graphics)
- ▶ **QuaNix®8500** Software searches for existing Excel version on the PC and starts it before data transfer automatically

Technical Data

Fe-Probe ▶

Measurements on iron and steel substrate

NFe-Probe ▶

Measurements on non-magnetic metal substrates, such as aluminum, zinc, copper, brass, stainless steel

Range ▶

see specification of probes

Resolution ▶

0,1 µm	0 to 99,9 µm	0.01 mil	0 to 9.99 mil
1 µm	100 bis 999 µm	0.1 mil	10 to 100 mil
0,01 mm	≥ 1,00 mm	1 mil	> 100 mil

Accuracy ▶
(* of reading)

(factory calibration on zero reference plates supplied with the gauge)

± (1 µm + 2%*)	0 bis 2000 µm
± (0.04 mil + 2%*)	0 to 80 mil
± 3,5%*	> 2000 µm (80 mil)

With the one-point or two-point calibration the accuracy can still be improved using the optionally available test shims.

Minimum Area ▶
Minimum Curvature ▶
Minimum Substrate Thickness ▶

Fe-Probe 20 x 20 mm ² (0.8" x 0.8")	NFe-Probe 20 x 20 mm ² (0.8" x 0.8")
convex 5 mm (0.2")	concave 30 mm (1.2")
Fe-Probe 0,2 mm (8 mil)	NFe-Probe 0,05 mm (2 mil)

Interface ▶

wireless 2.4 GHz, range max. 10 m (30ft) in undisturbed environment

Temperature Range

Storage	Operation
-10°C to 60°C (14°F to 140°F)	0°C to 50°C (32°F to 122°F)

Power Supply ▶
Dimensions ▶
Weight ▶

2 x batteries (AA) 1.5V Alkali, or 2 x rechargeable batteries (AA) 1.2V
124 mm x 67 mm x 33 mm (4.9" x 2.6" x 1.3")
ca. 120 g (4.3 oz) gauge with batteries and probe

Equipment

Scope of supply

- ▶ Handheld gauge with optional probe
- ▶ 2 batteries AA 1,5V (alkaline)
- ▶ Adapter cable for external probe
- ▶ Instruction manual
- ▶ Test certificate for optional probe
- ▶ Soft pouch with clip
- ▶ Case for transport and storage



Options

- ▶ Fe-Probe 2 mm (80 mil)
- ▶ Fe-Probe 5 mm (200 mil)
- ▶ NFe-Probe 2 mm (80 mil)
- ▶ Dual-Probe Fe 2 mm/NFe 2 mm (80 mil)
- ▶ Dual-Probe Fe 5 mm (200 mil)/NFe 2 mm (80 mil)
- ▶ Calibration shims, Zero reference plates, also available as set
- ▶ **QuaNix®**-Software for transfer to and evaluation of the data in EXCEL and for gauge configuration (*)
- ▶ USB interface (including extension cable) for wireless bi-directional data transfer between gauge and PC (*)

(*) Already included in the scope of supply of the **QuaNix®8500**
Premium version

